

## AN CONSULTANTS ( MEP DESIGN/PLANNING- SERVICES)



**ENGINEERING CONSULTANT: MECHANICAL-  
ELECTRICAL - PLUMBING WORKS; SPECIALITY IN  
ELECTRICAL (INFRASTRUCTURE-BUILDING WORKS)**



**AN CONSULTANTS**

Address: Office # 5, Ground Floor Tower 55,  
D-Markaz Gulberg Residencia.

Phone: +92- 322-5107371

Email: [an-consultants@anconsultants.tech](mailto:an-consultants@anconsultants.tech)  
[ahmed7sultan@anconsultants.tech](mailto:ahmed7sultan@anconsultants.tech)

Web : [http:// anconsultants.tech](http://anconsultants.tech)



**CONSULTANTS**

## PAKISTAN ENGINEERING COUNCIL

Registration No: **CONSULT/2419**

Date of Registration: **08-02-2023**



Serial No **15770**  
PEC-4A

### CERTIFICATE OF REGISTRATION OF PAKISTANI CONSULTING ENGINEER

(UNDER PAKISTAN ENGINEERING COUNCIL ACT 1976)

This is to certify that M/s AN CONSULTANTS Address OFFICE NO. 05, GROUND FLOOR, TOWER-55, D-MARKAZ GULBERG RESIDENCIA, ISLAMABAD have been registered as Consulting Engineers at Serial No CONSULT/2419 of the Register of Pakistan Engineering Council with following particulars:-

Type of Ownership (021,022,023,024) **(SOLE PROPRIETOR)(ENGR. MUHAMMAD AHMED SULTAN, ELECT/26734)**

Field of Specialization


(Project-profile Code Nos.) **1201(i)(ii)(iii)(iv)(vi),1203(i)(ii),1204(i),1208(ii),1210,1220,1236 (SEVEN ONLY)(FOR ELECT & MECH ENGG WORKS ONLY)**

**SERVICE CODES:**

**0537,0539,0540,0542,0543,0546,0547,0548,0571(NINE ONLY)  
(FOR ELECT & MECH ENGG WORKS ONLY)**

Date of Issue:  
**29/05/2024**



  
Registrar  
Pakistan Engineering Council,  
Islamabad.

Note:

1. This Certificate of Registration shall expire on **30th June 2026** and will be renewed on payment of the required fee before **31st July, 2026**.
2. Description of project profile codes is shown on reverse.





## **Who we are:**

We are Engineering Consultants having 12 years or more of Experience in Engineering Services and we Design / Plan and supervise Mechanical- electrical- Plumbing works in infrastructure works and building works. We are committed to provide the Consultancy Services of International Standards and our MEP Designers are well versed with International Design Codes and Standards, including British Standards (BS), NEC, NFPA Codes, ISO, IEC, ASHARE, Safety Standards, Local Bylaws and Standards. We are well known to the changing global energy requirements and the efforts associated with the changing energy trends. Our team is committed to provide Energy Efficient systems keeping in view the green building requirements and LEED guidelines. We are also working on Alternate Energy Utilization and promotion of sustainable energy sources in our projects.

Our commitment to integrity builds strong relationships, our innovations result in healthier, inspirational environments, our

holistic LEED Design Service produces green workplaces that energize employees, when you hire M/s AN Consultants, we take the time to discuss your project goals. We listen proactively. We ask questions. We make sure that we understand your needs. Then, we strategize with you to complete your project within budget and on time. We become your partner and you become ours. We deliver expert mechanical, electrical and plumbing project solutions. We use the latest technology to stay on the cutting edge of sustainable design practices.

CONSULTA



### **Our Vision:**

To deliver excellent and value-added professional services to our clients in order for them to excel and create win-win environments for all our clients and customers by solving their engineering related problems.



## **Our Values:**

- Excellence
- Integrity
- Efficacy
- Accountability
- Professionalism



Our MEP staff is capable to handle all capacity of MEP Design and supervision jobs; carrying out Design Calculations on a variety of Buildings i.e., residential, commercial, educational, leisure/sports, health facilities, industrial etc. Our team has hands-on experience of Electrical Distribution Infrastructure Designing, Water Supply, Drainage and Sewerage Infrastructure Networks for new developments as well as for Rehabilitation and Augmentation, using state of the art modern Software Packages



## **Mission Statement:**

Our mission is to provide efficient and cost effective design solutions to our valued client keeping in view the MEP-design limitations/ client requirements/ codes requirements / site requirements and conditions along with fulfilling local and international standards/code requirements. Project completion with fulfilling best operational and maintenance requirements in design and planning.

## **Services Provided:**

CONSULTANTS

1. Electrical Infrastructure Designing (Overhead and Underground)
2. External Electrification (Design / Planning and Getting Approval from Line Agencies (DISCOS such as LESCO, IESCO, etc.))



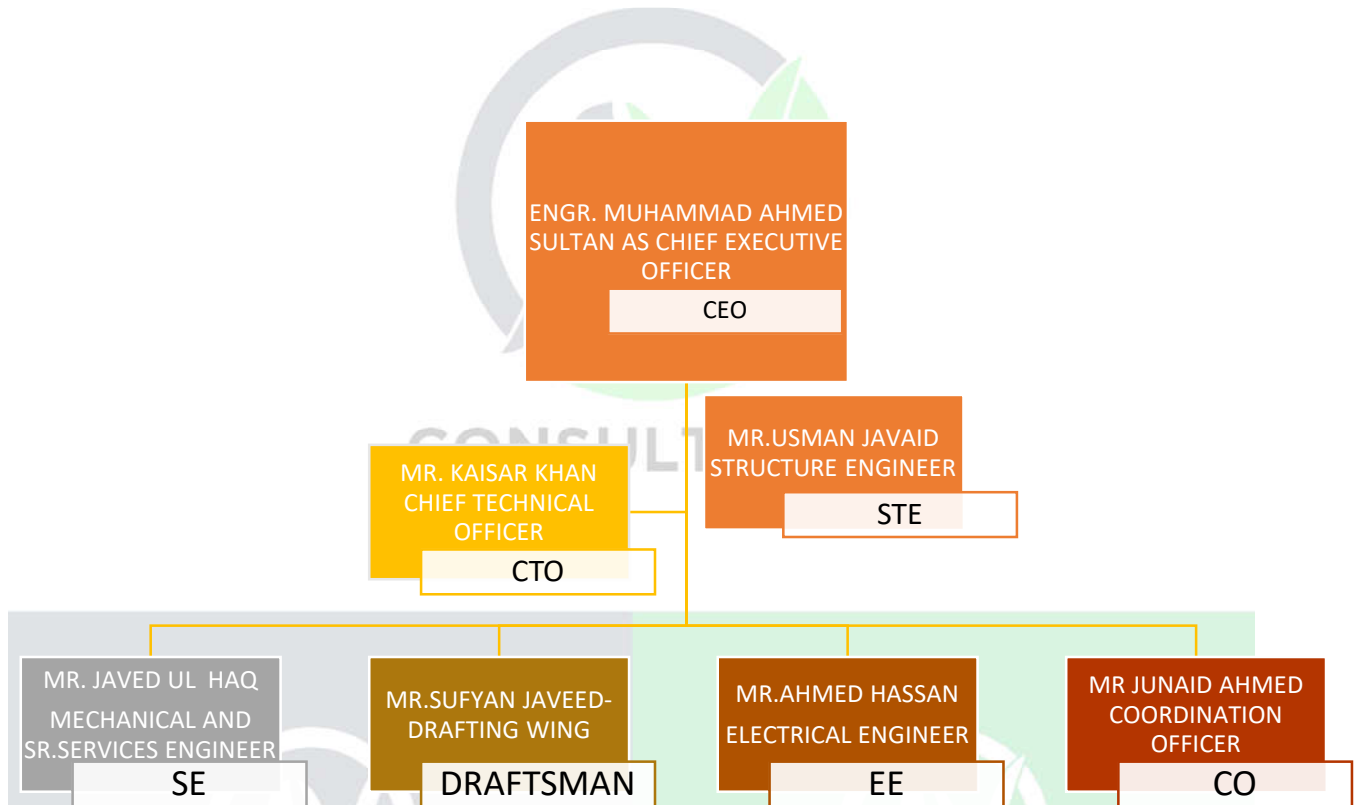
CONSULTANTS

3. Building MEP Design and Supervision for High Rise Buildings
4. Sewerage and Drainage System Design and Supervision.
5. Water Supply Scheme Design and Supervision.
6. Fire Fighting System Design and Supervision.
7. Building Structures Design and Supervision.
8. HVAC Design/ Planning and Supervision.
9. Renewable Energy Systems Design and Supervision.
10. Integrated Building Automation Systems/ Building Management System.
11. Energy Audit and Audit of MEP works (Systems Health Estimation of installed MEP System/ Networks) as per NEECA Standards and as per Star Rating mechanism for Energy Efficiency.
12. Liason / Coordination Services between Clients and Discos (LESCO-PESCO-SNGPL-CDA-RDA-Disaster Management – TMA etc.)





**COMPANY ORGANOGRAM:**



We are equal opportunity employer and give all our employees the best we can as an organization and keeping in view the esthetics and good human resource managements.

We are having around 20 Plus Engineering Staff as well Supporting Staff to coordinate and get the job done within prescribed timelines



as per the standards as well as client requirements and site conditions.

## **KEY BENEFITS FOR OUR CLIENTS:**

- Increase productivity
- Create capacity
- Reduce costs
- Increase competitiveness
- Improve reliability
- Improve accuracy of development forecast
- Reduce timelines by managing MEP services execution output
- Increase flexibility to address variances in design-planning demands.

## **PROJECTS CATAGORIES:**

- a) Electrical infrastructure planning b) Electrical Building Network Design and planning c) Mechanical Design and planning d) Fire Fighting Design and Planning. e) Supervision Services. f) Public Health Services.

## **Electrical Town Planning**

- The Gate-Faisal Town by RedSon.(a)
- PHA Nowshera. (a)
- Park Avenue (Peshawar). (a)
- The Garden (Mardan). (a)

- Garden Maison (Mardan). (a)
- Mahria Town. (a).
- Satellite Town Thotha (a)
- Satellite Town Langerpura. (a)

### **Commercial Blocks.**

- Parkland-Builders-Plot-04(800kW), Plot- 05(900kW) & Plot- 08(400kW), Sector-F9/G9, Islamabad-Blue Area. (a)
- Parkland-Builders-Plot-27, Sector, I/8 Markaz, Islamabad. (a)
- Parkland-Builders-Residential, Flats-Plot-11-D (Approx: 1MW), Sector, G-5, Islamabad. (a)
- Mall of Islamabad-MOI-F-10 Markaz. (b)
- Aura Square-F-10- Markaz. (b),(f)
- Mall of Islamabad-MOI-2-F-10 Markaz. (b), (c), (d)
- Mall of Jinnah Super-MOJS- F7 Markaz. (b).
- Mall of Wah-MOW. (b), (c), (d).
- IBC-Building- Mumtaz City. (b), (c), (f).
- Mall 8-Mumtaz City. (b), (c).
- Pavilion-99- Bahria Town- Phase-04 (S& S Builders & Developers). (e)
- Khan-zaman Plaza-Bahria Enclave. (b), (e), (f)
- 360 © Residencia- Hajvari Group. (b), (c), (d), (e).
- Pavilion-Executive- Mumtaz City-Rawalpindi (S& S Builders & Developers). (b), (e).
- Kargah Residencia- Srinagar Highway (4 Towers-19 Stories). (b), (c), (d) , (f) and many more.

### **Educational Facilities**

- American Lysetuff- Multi Gardens-B-17 (b), (e).
- Head-Start-Kuri Campus. (e).
- Head-Start-H-13 Campus. (e).
- NIH BHU Labs- (b). and many more.

## **Leisure Facilities**

- Best-Western Hotel-Premier- Islamabad (b), (e).
- Best-Western Hotel-Bahria Phase-04- Sky-nine Developers (b), (f) , (e).
- Ramada Hotel- Bahria Phase-04- Sky-nine Developers (b), (e). and many more.

## **Industrial Facilities**

- Metro Pharmaceuticals Rawat-RCCI. (b), (e).
- Royal Plastics-Gadon Industrial Area-Peshawar (b).
- Linta Pharmaceuticals Rawat-RCCI. (b), (e).
- NOVEX Pharma Rawat-RCCI. (b), (e).
- Eden Pharmaceuticals Rawat-RCCI. (b), (e).
- Karson Pharmaceuticals Rawat-RCCI. (b), (e).
- Rotex Pharmaceuticals Humak- Rawalpindi. (b), (e).
- National Textile University-Technical Textile Center. (a), (b),(c),(d).
- SMT- Chip Board Industries- I9 Islamabad. (b) and many more.

There are number of projects which are not mentioned in the list but we provide services which will ensure reliability and Increase flexibility to address variances in design-planning demands.

## **Hospital and Health Facilities:**

- CMU-NIH (National Institute of Helath Sciences)-Storage – Hall (400 Tonn Capacity)-JV with PEPAC. (c).
- Salma Khafeel Hospital-Blue Area. (b), (e).
- Mother and Child Hospital-200 Bed. (a) (b).
- 50 Bed Hospital Gilgit- JV with PEPAC. (b).
- AL-Shifa Eye Trust Hospital-ALZA Pharma Block and Shifa Tower. (b), (e).

- Care Medical Center-Rawat by Shapers Construction & Free Quaran Education Trust. (b), (e).
- and many more.

**Contact Us:**



**Address:** Office # 5, Ground Floor Tower 55, D-Markaz Gulberg Residencia. & Office # 224, 2<sup>nd</sup> Floor, Kashif Blair Plaza, G-8, Markaz, Islamabad.

**Phone:** +92- 322-5107371, +92-310-550046

**Email:** [an-consultants@anconsultants.tech](mailto:an-consultants@anconsultants.tech) or [ahmed7sultan@anconsultants.tech](mailto:ahmed7sultan@anconsultants.tech) or [ahmed7sultan@gmail.com](mailto:ahmed7sultan@gmail.com).

**WebSite:** <http://anconsultants.tech/>

